

M50 SERIES PROGRAMMABLE DC POWER SUPPLY

M50 SERIES PROGRAMMABLE DC POWER SUPPLY

M50 series are easy-use programmable linear DC power supply, upgrading from M10 and M30 series classical power supply.

The panel setting is same as most linear DC power supply, no any number key and no more function key. As well as having M10,M30 series features, they have timed outputs of voltage and current, a compact and clear user interface with PC and a standard USB, so the programming become a very simple work.

M50 series programmable DC power supply meet the requirements of various forms desktop and integrated system testing.

They are widely used in research and development, education, training, industrial control, mobile communication, and product testing, debug etc.

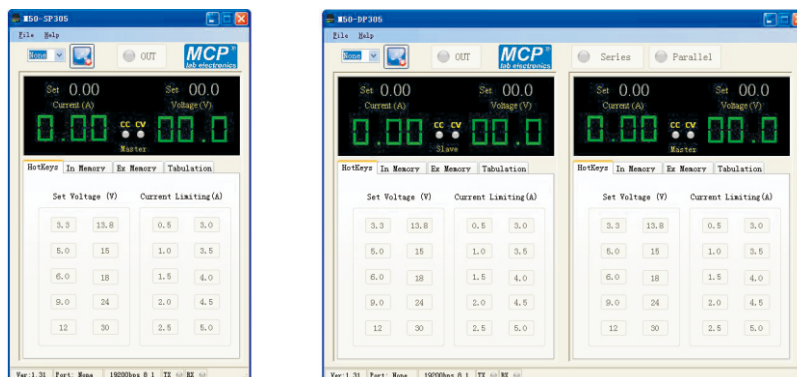


Advanced functions

Panel setting:



PC software interface:



M50 SERIES PROGRAMMABLE DC POWER SUPPLY

M50-YP MULTI-OUTPUTS PROGRAMMABLE DC POWER SUPPLY



Features

- .One adjustable output and two fixed outputs
- .Output off function
- .LED digit display and setting
- .Standard interface USB
- .Constant voltage and constant current
- .Aluminium alloy panel



M50-YP305E

Specifications

- .Line regulation: CV $1 \times 10^{-4} + 3\text{mV}$ CC $2 \times 10^{-3} + 3\text{mA}$
Fixed output 1%
- .Load regulation: CV $1 \times 10^{-4} + 4\text{mV}$ CC $2 \times 10^{-3} + 5\text{mA}$
Fixed output 1%
- .Ripple & noise: CV 3mVrms CC 3mArms
Fixed output 10mV
- .Fixed output accuracy: 2.5%
- .Display accuracy: Voltmeter $\pm (0.2\% \text{Rdg} + 2\text{digits})$
Ammeter $\pm (1.0\% \text{Rdg} + 2\text{digits})$
- .Input voltage: 110~127VAC $\pm 10\%$ 60Hz, 220~240 $\pm 10\%$ 50Hz
Switchable

Model	Output 1	Output 2	Output 3	Dimensions(W × H × D)	Weight
M50-YP202E	0~20V 0~2A	12V 500mA	5V 500mA	170×160×250mm	6kg
M50-YP303E	0~30V 0~3A	12V 500mA	5V 500mA	170×160×250mm	6kg
M50-YP305E	0~30V 0~5A	12V 500mA	5V 500mA	170×160×250mm	7kg



PC software control